

## Contact Us

**Chairman** Rev Phil Andrews - 7 Park Crescent  
01702 342159

**Vice-Chairman** Mr Andrew Atkinson - 28 Park Road  
01702 437722

**Secretary** Mrs Jill Freeth - 1 Park Crescent  
01702 340498

**Treasurer.** Mr Paul Cavanagh - 1 Park Crescent

**Membership** Lisa Cooper - 15 Park Road

## Other Executive Members:

Tony Brown, Helen Greensill (Park Crescent), Peter Fitzgerald, Phillip Giles, Sally Harrup (Park Rd) Neil Lands, (Avenue Terrace) Matt Norfolk (Avenue Rd),

Email [info@miltonconservationsociety.com](mailto:info@miltonconservationsociety.com)

---

## MEMBERSHIP –

Thank you to everyone who has renewed their membership. If you have not yet joined then its not too late - your contribution really does help the Society - please fill in the form below and drop it with your subs in a sealed envelope to 1 Park Crescent.

Thanks to **MGA Printing at 52-54 Milton Road** for kindly sponsoring our membership cards again this year.  
**Paul Cavanagh (Treasurer)**

---

Name/s \_\_\_\_\_

Address: \_\_\_\_\_

Telephone Number: \_\_\_\_\_

I/we enclose £\_\_\_\_\_ for membership for\_\_\_\_adults residing at the above address. (£3.50 per adult / £5.00 per household)

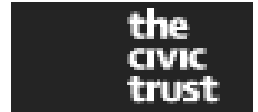
*This newsletter was kindly reproduced by*

**avenue**  
BAPTIST CHURCH  
reaching the heart of Milton



# Milton Conservation Society

Registered with



## Newsletter

## Autumn 2008

[www.miltonconservationsociety.com](http://www.miltonconservationsociety.com)

**Welcome** to the Autumn 2008 edition of the newsletter. This year marks 21 years of work to improve our area which we celebrated with a garden party - see article below. We are not resting on our laurels however and will continue to work to make Milton a better place to live. Hopefully you will share this vision and join us to help make it happen.



Sadly we also learned that our first secretary Janet Bull has died after a long illness.

Janet, pictured left, took on the role of founding secretary with great enthusiasm and energy and was instrumental in getting the conservation area and Society established. She had an engaging and disarming personality and successfully continued in her role for many years until she moved to France.

The Society and its members owe her a debt of gratitude.

## Why Your Membership Matters.

Thanks to all who have joined or renewed their membership. This year we carried out a house to house collection and had many interesting chats with residents about our area. One thing that became clear is that many people do not understand what Conservation is and what it means for them

### What is a conservation area?

A conservation area is an area which is considered to have sufficient architectural or historical interest and whose character or appearance is considered worth preserving. Milton is notable because it represents the early boom years during the expansion of Southend from the mid Victorian to the early Edwardian years.

Being a conservation area does not mean that it is perfect and must remain unaltered though it does mean the Council recognises its value and that any changes should respect its character.

Architectural features and individual buildings are an important part of preserving the character but often the whole area is greater than the sum of the parts - think of the Royal Crescent in Bath - each constituent building is worthy of preservation in its own right but when collected together as in the Crescent each building gains from its neighbours. Further the fact that the Crescent has an uninterrupted view from the front enables it to be enjoyed as a whole.

So with Milton each building contributes to the character and its relationship to its neighbours as does the space around it. Trees and front gardens in the Milton Conservation Area have added protection which has ensured we can enjoy the high level of greenery we have today.

However, it is worth noting that conservation areas are reviewed periodically to see whether they still have features worth conserving. Single changes rarely sweep away an area - rather it is the accumulation of many changes, often small and seemingly insignificant, which gradually chip away the original features which

distinguished the area and gave it its character. Once the character is lost it may well lose its status as a conservation area.

### What does the Society do?

The Society helps protect the area by commenting on planning applications so that any development whether small (e.g. replacement windows) or large (house conversion or new builds) do not erode the area's character.

You may have seen in the Echo recently that many people in Westcliff are protesting about the flats being built on site of the former Grosvenor hotel on The Leas. Had they made their views known before the plans were approved they might have been able to change the outcome but now it is too late.

Having a voice doesn't mean having a veto so sometimes we have to be realistic about what is possible and accept developments which are not ideal but are better than what would have happened with no input from the community.

This Society also:-

- represents you on the Council's Conservation Working Party which influences policy on issues which go beyond our area.
- can channel residents concerns over local issues such as parking, traffic, litter etc to the Council officers and members.
- sends out three newsletters a year so that you know what is happening in the area.

### Your membership matters!

Subscriptions are important as they pay running costs such as stationery and postage and for membership of the Civic Trust which is the umbrella organisation for over 750 civic societies in Britain and provides valuable support when dealing with local and central government bodies. We also currently pay for two planters to help green-up our streets.

**Most importantly** your membership adds legitimacy to the views we express when dealing with official bodies - the more representative we are the more weight we can bring to bear when tackling issues and the more notice that will be taken of your views.

### Why does this matter to me?

Owners benefit from property values which tend to be higher in Conservation areas than similar properties in surrounding areas.

Everyone, even if you do not own where you live you still benefit from the greater protection the area has from harmful developments which, thanks to past efforts, help make Milton a greener and more pleasant place to live, work and play.

The Society is run by volunteers who give their time freely as we feel passionately about this area and want to protect and improve it as best we can. If you aren't a member but care about where you live then please join us by filling in the form and make your voice heard.

## A Date for Your Diary

We are holding a Quiz night & Fish and Chip supper at Barons Court School on Friday 21 November at 7.30pm. to raise funds for a new project to improve the planting in one part of the conservation area - more details in the next newsletter!

Tickets on sale now at £6.00 per head from any of the contacts listed on the back page. We will need to know how many meals to order so tickets must be ordered by Monday 17<sup>th</sup> November at the latest.

## 21<sup>st</sup> Birthday Party

Earlier this year we held a Garden Party for members to mark not only the 21 years that the Society has been campaigning to improve our neighbourhood but also as a nice way to get as many people in the area together so that neighbours could get to know each other.

Over 50 people including ward councillor Jonathon Garston came during the afternoon and enjoyed a barbecue and drinks in the

sunshine - despite the gusts of high wind (what a summer!) Pictured below are those who stayed to the very end when the birthday cake was cut and shared.

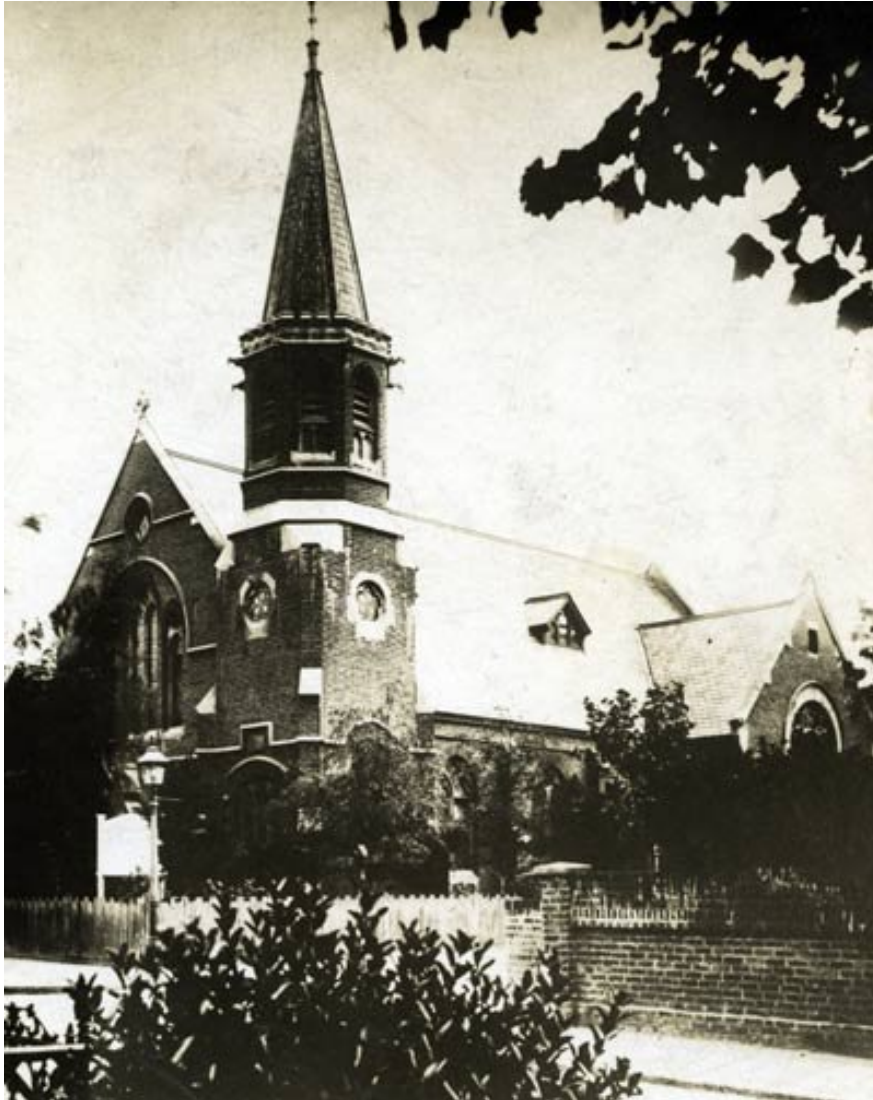


## Horticultural Tip - Growing Blueberries

A number of people asked at the garden party how I got so many blueberries on each bush. Apart from keeping them well watered with rainwater I forgot to mention that you should have more than one variety as cross pollination produces much better crops - Sorry!

If you have not tried them they are very easy to look after requiring no special pruning and are not prone to disease though the birds do like the fruit as much as you will once the berries start to colour up so will need some protection then - I put mine in the green house or just cover them with netting. They prefer an acidic soil but take readily to being grown in pots so this should not be a problem. Although they have been called a super-food, they just taste great and are well worth a go if you have not tried growing them yourself yet. As a bonus you get pretty white flowers in spring followed by vivid autumn leaf colours.

## Then and Now



This is St George's Presbyterian Church which stood on the corner of Park Road and Park Terrace. It was built in traditional Victorian red brick and was completed in 1897 though this picture dates from round about 1910. Before then a tent was used on the site as a

temporary church though severe weather was always a problem and not surprisingly a gale eventually destroyed the tent when services were moved to the West Cliff Hotel until the new structure was complete. The congregation grew to fill the 200 seats available though the church's heating was troublesome and often smoked causing at least one service to be abandoned. By the 1980s falling congregations lead to amalgamation with the Crowstone United Reformed Church in King's Road which was renamed Crowstone St George's.

The church was demolished in 1983 when a time capsule was discovered buried beneath the original foundation stone containing among various church documents a copy of the Southend Standard of 22 July 1897. When the new foundation stone for the care home which now occupies the site was laid in 1988 another time capsule was buried containing photographs of the demolition of the church and the construction of the new building amongst other items. The home is known as Abbeyfield St George's House to commemorate the link to the original church.

